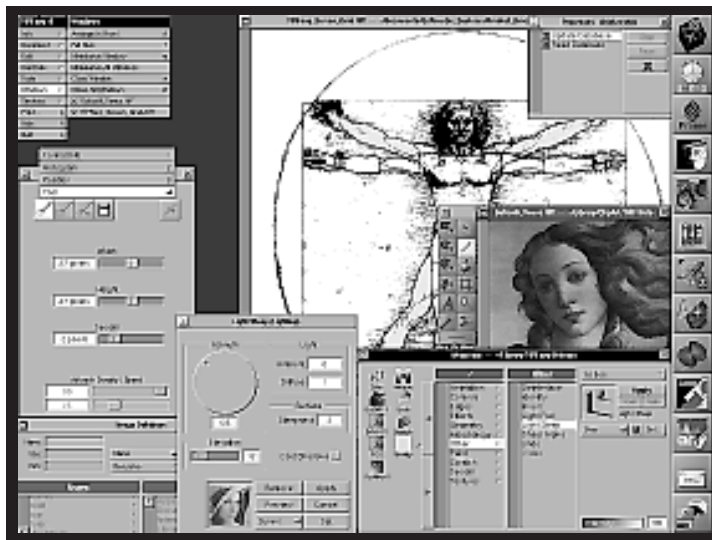


# Tiffany II

Advanced image processing application for NEXTSTEP™



## Features

- Intuitive user interface with multi-level undo/redo buffer.
- Multithreaded—internal process queue allows you to continue working while it is applying effects/filters with stop and pause.
- File Viewer-style Action Manager places commonly used effects and filters for quick retrieval.
- Alarm notification when free swapdisk space falls below 10MB.
- Pressure-sensitive tablet support.
- Load and save images, animations, selections and transformations.
- Documents: load TIFF, JPG, JPEG, GIF and EPS images; zoom range from 12.5% up to 3200%; correct display of images other than 72 dpi; suppress the use of the alpha channel to increase speed; clone images; view rulers in inches, cm, points, picas and pixels.
- Tools: arbitrary shaped pens with smooth or sharp edges; flood fill with configurable hue and brightness tolerances; airbrush with any shape and size, with user-definable density and fade area; any filter can be used manually, even with airbrush and fill; cloning with pen, airbrush and fill; partial undo with pen or airbrush.
- Image handling tools: resize image with six interpolation methods and four anti-aliasing methods; image cropping; output images to 1, 2 or 4-bit greyscale, RGB or CMYK colorspace with or without alpha channel; fast mirroring and rotation in 90 degree steps.
- Flexible selections: rectangle and ellipse, Bézier path, freehand and magic wand that automatically turns into a Bézier path for further editing; any bitmap can be used as a mask; text in any font, size and orientation; any selection can affect the surrounded area or just the outline; cut/copy of any shaped selection; paste into any selection, optionally with auto-scaling.
- Image processing filters: 16 different compositing methods—usable with any filter; set the intensity of any filter; ColorShield—to protect

specific color ranges; affine mapping for rotation, scaling and shear; arbitrary color blends; controlled color replacement by one-to-one or range methods; perform image distortion with a user-defined formula; color correction with arbitrary curves or gamma correction with automatic gamma values calculation; noise reduction filters for removing speckles, moiré, dithered images; histogram operations like equalization and cut-off; lighting, Mandelbrot and Julia generators, hue and saturation shift, morphological, perspective, sharp, pseudo-coloring filters, etc.; arbitrary image warping.

- Automation: configure your own filter parameter and name it, define processes consisting several filters applied in succession, apply filter to several images simultaneously, auto scripting for large batch jobs.
- Image database: organize images in several folders; copying of images directly out of the database window; statistical image information, image thumbnail; image sorted by name, size, time or path.
- Animation support: user-definable number of frames/sec.; any operation can be applied to an animation instead of an image; cut/copy/paste of animations and selected frames; filters can operate on an animation; user-definable intensity curve over time, for animation fade in/out.
- API for programming your own filters. Begin building your TIFFany extensions and source code skeletons with the T2Builder.

Requires NEXTSTEP Release 3.1 or higher. Now shipping in Multi-Architecture Binary (MAB) format.



Alembic Systems International  
14 Inverness Drive East, Suite G-228  
Englewood, Colorado 80112, U.S.A.

303.799.6223 • 303.799.1435 fax • e-mail: [info@alembic.com](mailto:info@alembic.com)

©1993 Alembic Systems International. TIFFany II is a trademark of Caffeine Software.

To place orders, call toll-free

**1.800.452.7608**